

### Bazine personalizate polipropilenă (PP)

Polipropilenă (PP) bazine proiectate la comandă, toate formele și dimensiunile, opțiunile (picioare, sita de fund și evacuare de preaplin ...). Accesorii la cerere. Deasemenea disponibil : construirea de rezervoare de comanda proiectate cu panouri sandwich cross-striata, realizat din copolimer polipropilenă (PPCO).

### Custom-design polypropylene (PP) tanks

Polypropylene (PP) custom-designed tanks, all shapes and dimensions, all options (feet, support frame, bottom sump, overflow...). Accessories on request. Also available : construction of custom-designed tanks with cross-ribbed sandwich panel, made of polypropylene copolymer (PPCO).

### Spremnici od polipropilena (PP) po narudžbi

Rezervoari od polipropilena (PP) po meri, svih oblika i dimenzija, sve opcije (noge, noseći okvir, donji rezervoar, preliv...). Dodatna oprema na upit. Takođe dostupno: izrada rezervoara po meri sa rebrastim sendvič panelom od polipropilenskog kopolimera (PPCO).

📖	DESCR. / OPIS
B000100	Bazine PP / PP tank / Tanque de PP

### Bazine personalizate fibră de sticlă

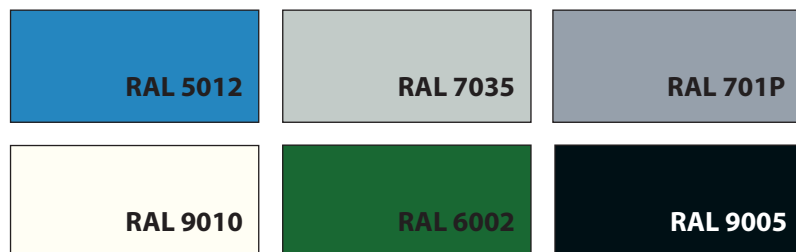
Poliester armat (PAFS) material pentru pagini din fibra de sticla ☞ pag. 13 și 17. Culori standard RAL : vezi imaginea (alte culori la cerere).

### Custom-design fiberglass tanks

Fiberglass reinforced polyester (FRP) material ☞ pages 13 à 17. Standard RAL colours : see picture below (other colors on request).

### Spremnici od stakloplastike po meri

Materijal od poliestera ojačanog staklenim vlaknima (POSV) ☞ strane 13 à 17. Standardne RAL boje : pogledajte sliku ispod (ostale boje na upit).

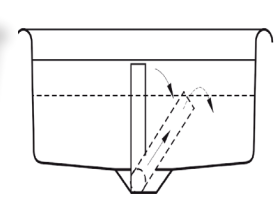
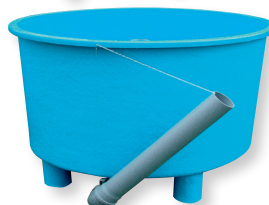
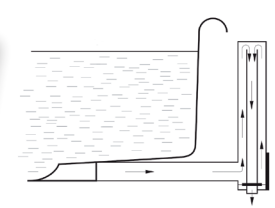
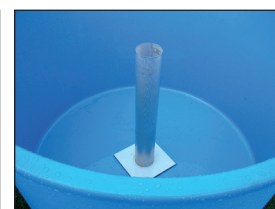
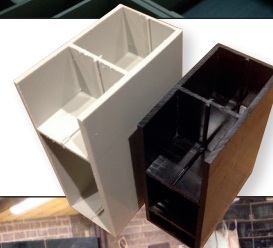


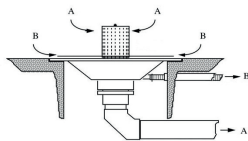
### Accesorii / Accessories / Dodaci

Sită de fund / Bottom sieve / Donje sito		Sită cilindru / Sieve cylinder / Cilindar sita	
📖	➔➔ (mm)	📖	Ø (mm)
B001000	300 × 300	B001050	110
B001010	400 × 400	B001060	160
B001020	600 × 600	B001070	225

Evacuare telescopică / Telescopic outlet / Teleskopski izlaz	
📖	dim. (mm)
B001100	110 × 110 × 50
B001200	110 × 110 × 63
B001300	110 × 160 × 75
B001400	160 × 160 × 90
B001500	160 × 160 × 110

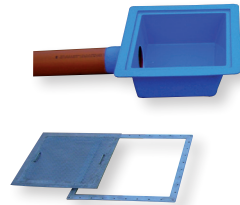
Evacuare pivotant / Swivel outlet / Okretni izlaz	
📖	Ø
B001600	DN 100 / 110 mm
B001700	DN 150 / 160 mm





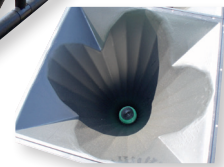
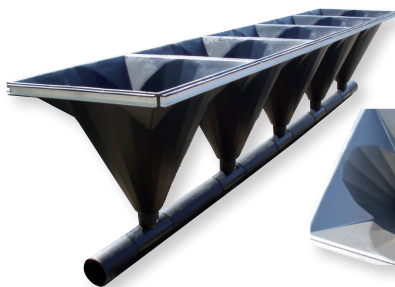
**Evacuare dubla / Double drain outlet / Dvostruki odvod**

	Ø
B001800	110 ... 160 mm



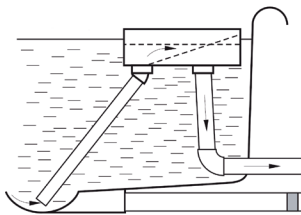
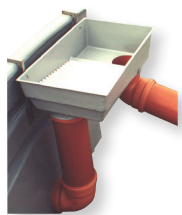
**Colectoare de fund / Bottom sumps / Donji odvodi**

	DESCR.
B029310	ABS Ø 220 × 110 mm / ABS Ø 220 × 110 mm ABS Ø 220 × 110 mm
B029300	PAFS patrate cu sita / FRP square with sieve / POSV kvadrat sa sitom



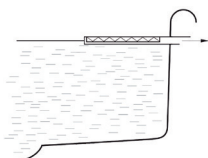
**Conuri evacuare decantare / Sludge cone decanter / Konusni dekanter za mulj**

	→↗↖ (mm)
B001810	960 × 960 × 1050



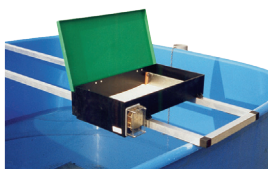
**Decantoare laterale / Lateral decanter / Bočni dekanter**

	DESCR. / OPIS	→↗↖ (mm)	Ø (mm)
B001820	Cutii / Box / Kutija	500 × 350 × 180 mm	50 ... 110
B001830	Cutii / Box / Kutija	850 × 540 × 210 mm	75 ... 200
B001840	Cutii / Box / Kutija	1030 × 610 × 250 mm	75 ... 250
B001850	Armături de fixare cutie / Box fixing armatures / Armature		



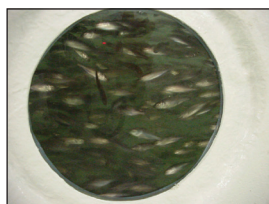
**Evacuare tip skimmer / Skimmer / Skimmer praznjenje**

	→↗↖ (mm)
B001880	filtru / strainer / cjedilo
B001890	plutitor / floating / plutajući 500 × 500 mm



**Accesorii / Accessories / Dodaci**

	DESCR. / OPIS
B001910	Support hranitor / Mounting frame for feeder / Montažni okvir za hranilicu
B001920	Couvercle / Lid / Poklopac
B001930	Izolație termică (spumă poliuretanică) / Thermal insulation (polyurethane foam) / Toplotna izolacija (poliuretanska pjena)
B001940	Geam ori pèrete sticla / Window or glass wall / Prozor



**Conetori pèrete despartitor / Bulkhead tank connectors / Priključci**

	Ø	DESCR. / OPIS
B026700	¾" ... 2"	PP simplu / PP outer thread / PP vanjski navoj
B026080	½" ... 2" ¾	PP dublu / PP outer & inner thread / PP vanjski i unutrašnji navoj
B028390	¾" ... 3"	PVC / PVC / PVC
B029330	¾" ... 3"	PVC cu sita / PVC with sieve / PVC sa sitom
R011028	40 ... 110 mm	ABS pentru cãptușeală folie / ABS for foil liner / ABS za folije



**Bazine PAFS pătrate cu colțuri rotunjite**

Inclusiv sifon jos și conducta de evacuare. Stativ și preaplin opțional.

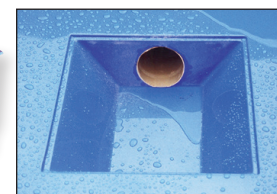
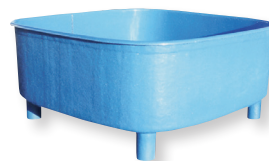
**Rounded-corner square tanks FRP**

Including bottom sump and outlet pipe. Stand and overflow optional.

**Zaobljeni uglovi kvadratni spremnici POSV**

Uključujući donji rezervoar i izlaznu cijev. Stalac i preklapanje opciono.

	Vol. (L)	↔↗↖ (int. mm)	↔↗↖ (ext. mm)	~ (mm)
B002050	250	700 × 700 × 630	740 × 740 × 750	240 × 240
B002060	340	900 × 900 × 500	1000 × 1000 × 600	300 × 300
B002070	500	890 × 890 × 680	990 × 990 × 820	240 × 240
B002250	630	1000 × 1000 × 680	1100 × 1100 × 800	240 × 240
B002310	1100	1050 × 1050 × 1000	1170 × 1170 × 1100	300 × 300
B002320	790	1190 × 1190 × 650	1280 × 1280 × 830	300 × 300
B002340	1100	1200 × 1200 × 900	1300 × 1300 × 1100	300 × 300
B002350	930	1250 × 1250 × 700	1350 × 1350 × 800	250 × 250
B002360	1080	1400 × 1400 × 650	1540 × 1540 × 830	300 × 300
B002820	1750	1380 × 1380 × 1000	1540 × 1540 × 1250	300 × 300
B002850	780	1500 × 1500 × 400	1620 × 1620 × 540	300 × 300
B002920	2150	1920 × 1920 × 730	2050 × 2050 × 900	490 × 490
B003000	2000	2030 × 2030 × 630	2160 × 2160 × 760	490 × 490
B003150	2330	2010 × 2010 × 730	2150 × 2150 × 970	490 × 490
B003210	3970	2030 × 2030 × 1100	2150 × 2150 × 1350	490 × 490
B003650	9250	3300 × 3300 × 1000	3500 × 3500 × 1200	500 × 500
B003660	19300	4100 × 4100 × 1350	4300 × 4300 × 1450	500 × 500
B003670	18000	4600 × 4600 × 1000	4800 × 4800 × 1200	1000 × 1000


**Bazine PAFS rectangulare**

Inclusiv evacuare fund și evacuare supraplin. Stativ opțional.

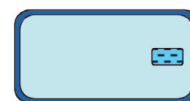
**Rectangular tanks FRP**

Including bottom sunk or stand pipe outlet. Stand optional.

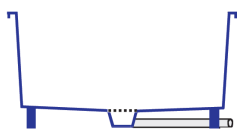
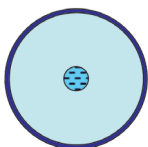
**Pravokutni spremnici POSV**

Uključujući donji izlaz za upuštenu ili postojanu cijev. Stalac opciono.

	Vol. (L)	↔↗↖ (int. mm)	↔↗↖ (ext. mm)	~ (mm)
B004870	780	1400 × 1000 × 610	1540 × 1140 × 1100	-
B004920	190	1800 × 500 × 260	1880 × 580 × 260	-
B005110	2100	2000 × 1000 × 1100	2200 × 1200 × 1300	Ø 50-75
B005120	1380	2000 × 1250 × 600	2140 × 1380 × 800	Ø 50-75
B005130	340	2250 × 520 × 350	2330 × 590 × 450	Ø 50-75
B005135	430	2330 × 610 × 350	2410 × 680 × 350	(*)
B005210	2380	2500 × 1000 × 1000	2660 × 1170 × 1200	700 × 400
B005220	730	2600 × 620 × 500	2800 × 820 × 600	480 × 220
B007640	900	2590 × 940 × 420	2800 × 1150 × 480	-
B005530	800	2960 × 600 × 500	3120 × 760 × 600	-
B005510	1280	3000 × 950 × 500	3200 × 1150 × 650	-
B005520	2420	3000 × 950 × 900	3200 × 1150 × 1100	700 × 400
B005540	290	3400 × 430 × 250	3500 × 540 × 350	Ø 50-75
B007795	350	3500 × 500 × 250	3540 × 540 × 270	-
B006280	850	4000 × 610 × 400	4080 × 690 × 400	(*)
B005410	2940	4220 × 1000 × 750	4360 × 1170 × 750	-
B005560	3550	4400 × 950 × 900	4600 × 1150 × 1100	700 × 400
B005430	3780	4500 × 1200 × 750	4640 × 1360 × 1000	-
B005580	3710	4600 × 950 × 900	4800 × 1150 × 1100	700 × 400
B006450	1130	5400 × 600 × 400	5560 × 760 × 400	-
B006570	5570	5890 × 1260 × 800	6030 × 1400 × 800	-
B005760	9490	6600 × 1250 × 1200	6800 × 1450 × 1400	Ø 50-160
B005770	10640	7400 × 1250 × 1200	7600 × 1450 × 1400	Ø 50-160



(\*) compatibil cu tăvi de incubatie pagina 24 (etapa dubla) /  
 compatible with hatching troughs page 24 (double stage) /  
 kompatibilan sa koritima za varenje strana 24 (dvostepeni)



### Bazine PAFS circulare

Inclusiv picioare sau cadru, conductă de evacuare, sifon jos și preaplin.

### Round tanks FRP

Including feet or frame, outlet pipe, bottom sump and overflow.

### Okrugli rezervoari POSV

Uključujući noge ili okvir, odvodnu cijev, donji rezervoar i preljev.

📖	Vol. (L)	Ø × ↑ (int. mm)	Ø × ↑ (ext. mm)	~ (mm)
B016510	150	500 × 790	580 × 860	-
B016550	220	700 × 610	800 × 700	-
B016930	600	1000 × 820	1100 × 900	-
B017110	1610	1220 × 1450	1360 × 1450	-
B017215	780	1320 × 600	1420 × 700	300 × 300
B017250	810	1490 × 490	1600 × 670	300 × 300
B017310	2120	1540 × 1200	1670 × 1400	ø 300
B017330	2770	1600 × 1450	1740 × 1600	-
B017705	3510	1980 × 1200	2100 × 1440	470 × 470
B017710	7530	2930 × 1200	3050 × 1440	470 × 470
B017717	10350	3400 × 1200	3600 × 1500	470 × 470
B017730	31730	4500 × 2100	4700 × 2400	-

### Bazine PP circulare

Inclusiv picioare sau cadru, sau instalat pe o platformă de beton.

### Round tanks PP

Including feet or frame, or to be installed on a concrete platform.

### Okrugli rezervoari PP

Uključujući noge ili okvir, ili za postavljanje na betonsku platformu.



📖	Vol. (L)	Ø × ↑ (int. mm)	📖	Vol. (L)	Ø × ↑ (int. mm)
incl. suport 200 mm / incl. support 200 mm / uklj. oslonac 200 mm					
B000110	2300	2000 × 750	B000130	3200	2350 × 750
B000111	4000	2000 × 1300	B000131	5600	2350 × 1300
B000120	2800	2200 × 750	B000140	5200	3000 × 750
B000121	4900	2200 × 1300	B000141	9100	3000 × 1300
pe o platformă / for platform / za platformu					
B000150	17000	4000 × 1350	B000175	52000	7000 × 1350
B000151	18800	4000 × 1500	B000176	57700	7000 × 1500
B000160	26500	5000 × 1350	B000180	67900	8000 × 1350
B000161	29500	5000 × 1500	B000181	75400	8000 × 1500
B000170	38200	6000 × 1350	B000190	106000	10000 × 1350
B000171	42400	6000 × 1500	B000191	117800	10000 × 1500

### PE bazine circulare

Fabricat din HDPE, culoare negru. Fund drept. Alte modele la cerere.

### PE circular tanks

Made of HDPE. Colour black. Flat bottom. Other models on request.

### PE cirkularni rezervoari

Izrađen od HDPE. Boja crna. Ravno dno. Ostali modeli na upit.



📖	Vol. (L)	Ø × ↑ (int. mm)	📖	Vol. (L)	Ø × ↑ (int. mm)
B040410	200	760 × 430	B040450	3500	2180 × 1170
B040420	400	1020 × 510	B040460	4100	2490 × 840
B040430	1000	1520 × 690	B040470	7200	2800 × 1200
B040440	1800	1830 × 690	-	-	-

☞ bazine metalice p. 20-21 / metal tanks p. 20-21 / metalni rezervoari str. 20-21

### Bazine Foster-Lucas

Inclusiv perete interior (opțional). Stativ și sifon inferior opțional. PP : design personalizat (opțiunea circulatorul cu pedale), ideal pentru cultura spirulină.

### Foster-Lucas tanks

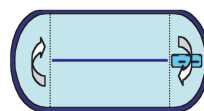
Internal wall (optional). Stand and bottom sump optional. PP : custom-design (option paddlewheel circulator), ideal for spiruline culture.

### Foster-Lucas rezervoari

Unutrașnji zid (opciono). Stalac i donji korito su opcioni. PP : prilagođeni dizajn (opcija cirkulatora s lopaticama), idealan za kulturu spirulina.

📖	DESCR. / OPIS	↗↗↗ (int. mm)
B015850	PAFS / FRP / POSV	3500 × 1200 × 600
B016130	PP	design personalizat / custom-design

☞ systèmes de culture de microalgues p. 193 / microalgae cultivation systems p. 193 / sistemi za uzgoj mikroalgi str. 193



### Bazine PAFS conice

Inclusiv picioare sau cadru și conector cu fund.

### Conical tanks FRP

Including feet or frame and bottom cone connector.

### Konusni spremnici POSV

Uključujući nožice ili okvir i donji konusni konektor.

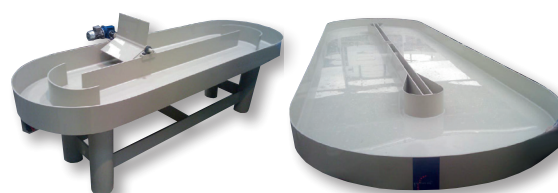
📖	Vol. (L)	Ø × [ 傘 + 傘 ] (int. mm)	α (°)	Ø × ↑ (ext. mm)
B018350	15	220 × [ 150 + 350 ]	54	250 × 600
B018390	100	490 × [ 160 + 540 ]	33	510 × 700
B018395	110	600 × [ 230 + 370 ]	37	640 × 600
B018510	220	700 × [ 340 + 510 ]	44	1020 × 850
B018520	300	700 × [ 500 + 650 ]	55	800 × 1150
B018580	210	820 × [ 290 + 380 ]	35	970 × 670
B018650	400	820 × [ 450 + 700 ]	48	980 × 1150
B018655	300	900 × [ 200 + 750 ]	24	1000 × 950
B018720	640	1000 × [ 500 + 700 ]	45	1100 × 1200
B018730	1030	1000 × [ 500 + 1200 ]	45	1100 × 1700
B018750	920	1100 × [ 350 + 920 ]	32	1240 × 1270
B018755	1000	1200 × [ 200 + 1200 ]	23	1300 × 1400
B018950	2270	1540 × [ 200 + 1200 ]	15	1660 × 1400
B019150	3220	1600 × [ 600 + 1450 ]	37	1740 × 2050
B019350	6750	2000 × [ 600 + 2000 ]	31	2180 × 2600
B019360	7100	2160 × [ 600 + 2000 ]	29	2230 × 2600

De asemenea, disponibile: rezervoare de con dublu și rezervoare cilindrice curbate de fund

also available : double-cone tanks and curved-bottom cylindrical tanks

Dostupni: rezervoari sa dvostrukim konusom i cilindrični rezervoari sa zakrivljenim dnom

☞ Rezervoare artemia pagina 194 / Artemia tanks page 194 / Artemia rezervoari str. 194



### Bazine PP conice

Inclusiv picioare sau cadru și conector cu fund.

### Conical tanks PP

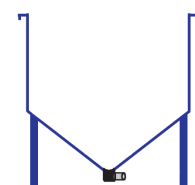
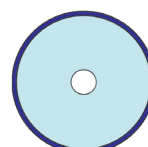
Including feet or frame and bottom cone connector.

### Konusni rezervoari PP

Uključujući nožice ili okvir i donji konusni konektor.

📖	Vol. (L)	Ø × [ 傘 + 傘 ] (int. mm)	α (°)	Ø × ↑ (ext. mm)
B000210	100	500 × [ 250 + 500 ]	45	600 × 900
B000220	200	600 × [ 300 + 600 ]		700 × 1050
B000230	300	700 × [ 350 + 700 ]		800 × 1200
B000250	500	800 × [ 500 + 850 ]	51	900 × 1500

alte modele disponibile la cerere  
other models available on request  
ostali modeli dostupni na zahtjev





### Bazine speciale pentru sturion

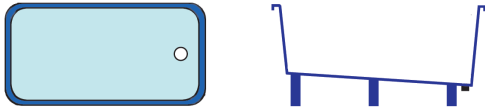
Inclusiv picioare și fund înclinat. Sifon de fund opțional.

### Special tanks for sturgeon

Including feet and sloping bottom. Bottom sump optional.

### Specijalni rezervoari za jesetru

Uključujući stopala i koso dno. Donji karter opciono.



	Vol. (L)	↗↗↗ (int. mm)	optiune / option / opcija
B004300	1500	2400 × 1200 × 600 / 700	-
B004310	1500	2400 × 1200 × 600 / 700	evacuare / bottom sump / donji odvodi



### Rezervoare de distribuție și canale

Personalizat (perete interior, suport, flanșe...) la cerere.

### Distribution Tanks and channels

Custom design (internal wall, feet, flanges, ...) on request.

### Distributivni rezervoari i kanali

Dizajn po meri (unutrašnji zid, noge, prirubnice,...) na zahtev.

	DESCR. / OPIS
B019900	Rezervor distributie / Distribution tank / Distributivni rezervoari
B020400	Canal / Channel / Kanali



### Containere de depozitare

Fund plat, incorporabile, stivuit, culoare verde / gri / albastru.

### Holding containers

Flat bottom, nestable, colour green / grey / blue.

### Držanje kontejnera

Ravno dno, ugniježljivo, boja zelena / siva / plava.



	Vol. (L)	↗↗↗ (int. mm)	A	B	C	D
B022200	100	800 × 500 × 280	-	B024550	B025350	B026010
B022300	200	1150 × 550 × 360	-	B024552	B025450	B026015
B022400	200	800 × 490 × 590	-	B024554	B025550	B026020
B022500	300	1100 × 620 × 520	B024600	B024556	B025650	B026025
B022600	400	1110 × 710 × 590	B024700	B024558	B025750	B026030
B022700	500	1440 × 790 × 500	-	-	-	B026035
B022800	550	1180 × 830 × 620	B024800	B024560	B025850	B026040
B022900	700	1180 × 830 × 800	B024900	B024562	B025950	B026045
B023000	1100	1480 × 1050 × 800	B025000	B024564	B026003	B026050
B023100	1500	1680 × 1250 × 800	B025100	B024566	B026006	B026055
B023200	2200	1970 × 1340 × 920	B025200	B024568	B026009	B026060
B023300	3300	1900 × 1900 × 1030	-	-	-	B026065

A : Canale pentru stivuitor / Forklift pockets / Džepovi viljuškara

B : Suport otel galvanizat / Galv. steel support frame / Galv. čelični noseći okvir

C : Suport cu roți / Frame with wheels / Okvir sa točkovima

D : Capac / Lid / Poklopac

	Scurgere totală / Total drain / Totalni odvod			Partea de montare perete despărțitor / Bulkhead fitting / Pregrada	
B026071	1"	PVC	B026080	½" × 1"	PP
B026072	1" ¼		B026081	¾" × 1" ¼	
B026073	1" ½		B026082	1" × 1" ¼	
B026074	2"		B026083	1" ½ × 2"	
-	-		B026084	2" × 2" ¾	

continue pe pag urmatoare / to be continued on next page / nastavak na sljedećoj stranici

Bazin cu fund plat / Single tank with flat bottom / Jedan rezervoar sa ravnim dnom					
	Vol. (L)	→↗↖ (int. mm)		Vol. (L)	→↗↖ (int. mm)
B022132	100	550 × 500 × 350	B022148	500	1070 × 720 × 620
B022134	180	750 × 500 × 500	B022150	600	750 × 750 × 1000
B022136	200	730 × 430 × 590	B022154	700	1070 × 720 × 800
B022140	275	570 × 570 × 900	B022158	1000	980 × 980 × 1000
B022142	300	1020 × 550 × 520	B022162	1100	1350 × 920 × 800
B022144	350	750 × 750 × 600	B022164	1600	1450 × 1100 × 940
B022146	400	1050 × 660 × 580	B022166	2200	1800 × 1150 × 950
Bazin cu picioare si robinet / Tank with feet and valve / Rezervoar sa nozicama i ventilom					
	Vol. (L)	→↗↖ (int. mm)		Vol. (L)	→↗↖ (int. mm)
B022152	600	750 × 750 × 1000	B022168	2200	1800 × 1150 × 950
B022160	1000	980 × 980 × 1000	B022170	3300	1720 × 1720 × 1030

capac la cerere / lids available on request / poklopci dostupni na zahtjev

### Găleată, Căni & Coșuri

Fabricat din PE sau PP, culoare alb / portocaliu / gri, stivuibile.

### Buckets, Tubs & Baskets

Made of PE or PP, colour white / orange / grey, nestable.

### Kante, Kade & Korpe

Od PE ili PP, boja bijela/narandžasta/siva, ugniježljiva.

Galeti, Cani / Buckets, Tubs / Kante, Kade			Cosuri / Baskets / Korpe		
	Vol. (L)	Ø × ↑ (ext. mm)		Vol. (L)	Ø × ↑ (ext. mm)
B043200	13 ○	300 × 280	B043780	44 ●	490 × 435
B043400	35 ○	420 × 375	B043790	58 ●	540 × 425
B043650	75 ○	665 × 485	B043795	70 ●	540 × 830

### Pubele cilindrice

Fabricat din HDPE, culoare alb, stivuibil. Capac si cărucior la cerere.

### Cylindrical bins

Made of HDPE, white colour, nestable. Lid and trolley on request.

### Cilindrične kante

Napravljen od HDPE, bijele boje, ugniježljiv. Poklopac i kolica na upit.

	Vol. (L)	Ø × ↑ (int. mm)	Ø × ↑ (ext. mm)	Υ (kg)
B043810	35	310 × 410	390 × 410	1,5
B043800	40	330 × 435	420 × 445	2,0
B043900	50	362 × 470 [*]	450 × 470	2,2
B043950	65	330 × 560	445 × 570	2,5
B044000	75	390 × 570 [*]	482 × 570	3,1
B044050	100	415 × 670	520 × 670	3,9
B044100	120	420 × 745 [*]	530 × 755	4,3
B044200	200	540 × 805 [*]	670 × 805	5,7

### EURO containere

HDPE, culoare gri. Pot fi stivuite și încorporate. Parti laterale inchise sau gaurite.

### EURO containers

Made of HDPE, colour grey. Stackable and nestable. Closed or perforated sides.

### EURO kontejneri

Od HDPE, siva boja. Može se složiti i ugniježditi. Zatvorene ili perforirane strane.

	●	○	Vol. (L)	→↗↖ (ext. mm)	→↗↖ (int. mm)
B041100	B041800		25	600 × 400 × 150	520 × 360 × 145
B041200	B041900		32	600 × 400 × 200	520 × 360 × 195
B041300	B042000		40	600 × 400 × 250	520 × 360 × 245
B041400	B042100		50	600 × 400 × 300	520 × 360 × 295
B041500	B042200		60	600 × 400 × 350	520 × 360 × 345
B041600	B042300		70	600 × 400 × 400	520 × 360 × 395
B041700	B042400		Capac / Lid / Poklopac		





### Containere piscicole

Realizat din PE, de culoare alba, încorporabile, mâner integrat de aluminiu.

### Fish farming containers

Made of PE, white colour, nestable, integrated aluminium handle.

### Kontejneri za uzgoj ribe

Napravljena od PE, bijele boje, ugrađena aluminijumska ručka.

📖	Vol. (L)	dim. (ext. mm)	dim. (int. mm)	Υ (kg)
B044300	80	Ø 650/500 × 400	Ø 600/490 × 380	3,6
B044500	106	830/690 × 570/440 × 400	770/680 × 510/430 × 390	6,1

### Cutii peste

Fabricat din HDPE, culoare alba și încorporabile pot fi stivuite. Drenaj integrat.

### Fish boxes

Made of HDPE, white colour. Stackable and nestable. Integrated drainage.

### Kutije za ribu

Od HDPE, bijele boje. Može se složiti i ugnijezditi. Integrirana drenaža.



📖	Vol. (L)	↗↗↗ (ext. mm)	↗↗↗ (int. mm)	Υ (kg)
B040000	15	600 × 400 × 125	460 × 340 × 105	1,5
B040005	20	600 × 400 × 155	460 × 340 × 135	1,6
B040010	35	800 × 450 × 190	645 × 400 × 180	2,6
B040030	60	800 × 450 × 270	645 × 400 × 260	3,8
B040040	75	890 × 560 × 235	725 × 495 × 228	4,3

### Containere largi

Fabricat din HDPE, culoare alb/rosu. Pot fi stivuite. Ermetice și etanșe la apă.

### Large mouth containers

Made of HDPE, white/red colour. Stackable. Airtight and watertight.

### Bačve sa širokim otvorom

Od HDPE, bijele/crvene boje. Stackable. Nepropusno i vodonepropusno.



📖	Vol. (L)	Ø × ↑ (ext. mm)	📖	Vol. (L)	Ø × ↑ (ext. mm)
B040110	3,6	198 × 173	B040160	26	316 × 424
B040120	6	198 × 265	B040170	42	410 × 416
B040130	10	274 × 239	B040180	55	410 × 518
B040140	15	274 × 328	B040190	68	410 × 632
B040150	20	274 × 400	-	-	-



### Cutie stocare tip palet

HDPE fabricat din (& PUR), pereți netezi, stivuibil (:: picioare, ≡ tălpi, ▭ capac).

### Pallet storage box

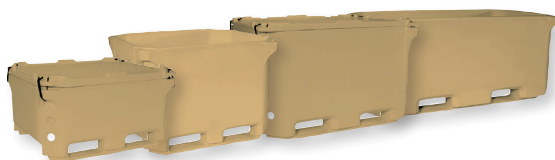
Made of HDPE (& PUR), smooth walls, stackable (:: feet, ≡ soles, ▭ lid).

### Paletna kutija za skladištenje

Od HDPE (& PUR), glatki zidovi, mogu se slagati (:: stopa, ≡ đon, ▭ poklopac).



📖 ≡	📖 ::	📖 ▭	Vol. (L)	↗↗↗ (ext. mm)	Υ (kg)
Standard / Standard / Estandar					
B044720	B044730	B044751	350	1200 × 800 × 600	33
B044740	B044750		500	1200 × 800 × 780	37
B044770	B044780	B044801	450	1200 × 1000 × 600	39
B044790	B044800		610	1200 × 1000 × 760	44
Izolati / Insulated / Izolovan					
B044850	-	B044861	400	1200 × 1000 × 570	40
B044860			700	1200 × 1000 × 820	53
B044870			1000	1470 × 1170 × 880	85
B044880			1400	1990 × 1170 × 870	120



① alte modele (de exemplu, cu izolație 70 & 220 L), capac etanș B044830, accesorii, ...  
other models (e.g. insulated 70 & 220 L), tight lid B044830, accessories, ...  
ostali modeli (npr. izolovani 70 & 220 l), čvrsti poklopac B044830, pribor, ...



☞ Bazine transport pește : vezi capitol L , pagina 92 ... 94 / Fish transport tanks : see chapter L, pages 92 ... 94 /  
za transport ribe : vidi poglavlje L, stranice 92 ... 94.

### IBC containere

Fabricat din HDPE, cu capac cu șurub Ø 225 mm, capac și robinet de golire. Cadru metalic cu suport pentru etichete. Palet din PE, de culoare neagră. Stivuibil.

### IBC containers

Tank made of HDPE with screw lid Ø 225 mm, cap and drainage valve. Metallic frame with label holder. Pallet made of PE, black colour. Stackable.

### IBC kontejneri

Rezervoar od HDPE sa poklopcem na navoj Ø 225 mm, poklopcem i drenažnim ventilom. Metalni okvir sa držačem etikete. Paleta od PE, crne boje. Stackable.

📖	Vol. (L)	➔➔➔ (ext. mm)
B040300	1050	1200 × 1000 × 1175

☞ Rezervor retenție p. 157 / retention tank page 157 / rezervoar za zadržavanje str. 157

### Cisterne

Fabricat din HDPE sau PAFS. Inclusiv gură de vizitare. Accesorii la cerere. Perne la cisterne disponibile la cerere (☞ a se vedea, de asemenea, rezervoarelor cu membrana si geomembrana pagina 22).

### Cisterns

Made of HDPE or FRP. Including manhole. Accessories on request. Pillow tanks available on request (☞ see also membrane tanks and geomembrane page 22).

### Cisterne

Izrađen od HDPE ili FRP. Uključujući šaht. Dodatna oprema na upit. Jastučni rezervoari dostupni na zahtev (☞ vidi takođe membranske rezervoare i geomembranu na strani 22).

📖	Vol. (L)	➔ . Ø / ➔➔➔ (mm)	📖	Vol. (L)	➔ . Ø / ➔➔➔ (mm)
PE orizontal / PE horizontal / PE horizontalno					
B060010	300	1080 × 630	B060060	2000	1660 × 1270
B060020	500	1530 × 700	B060070	2500	1850 × 1400
B060030	750	1630 × 750	B060080	3000	1900 × 1450
B060040	1000	1750 × 875	B060090	5000	2310 × 1740
B060050	1500	1630 × 1120	B060100	10000	2660 × 2460
PE vertical / PE vertical / PE vertikalno					
B060210	500	850 × 640 × 1060	B060260	1100	1450 × 720 × 1610
B060220	680	1200 × 750 × 990	B060270	1500	1520 × 720 × 1610
B060230	750	740 × 740 × 1640	B060280	2000	1950 × 670 × 1730
B060240	800	1050 × 670 × 1310	B060290	3000	2630 × 880 × 1650
B060250	1000	1290 × 670 × 1310	B060300	5000	2390 × 1350 × 1980
PAFS / FRP / POSV					
B060410	600	1370 × 920 × 910	B060610	300	1020 × 620 × 720
B060420	750	1650 × 920 × 910	B060620	400	1330 × 620 × 720
B060430	1000	2150 × 920 × 910	B060630	500	1620 × 620 × 720
B060440	1000	1460 × 1220 × 1040	B060640	500	1050 × 950 × 710
B060450	1500	2010 × 1220 × 1040	B060650	600	1340 × 630 × 1020
B060460	2000	1900 × 1430 × 1380	B060660	700	1460 × 1010 × 800
⋮	⋮	⋮	⋮	⋮	⋮
B060510	4000	3660 × 1430 × 1380	B060670	1000	1470 × 1010 × 990
B060520	5000	3660 × 1540 × 1520	B060680	1800	1540 × 1480 × 1280
B060530	6000	3430 × 1790 × 1700	B060690	2000	1940 × 1020 × 1530
B060540	7000	4000 × 1790 × 1700	B060700	5000	2310 × 1980 × 1690
B060550	8500	4300 × 1880 × 1820	B060710	13500	5060 × 2200 × 1950
B060560	10000	5000 × 1880 × 1820	B060730	15500	5060 × 2200 × 2220

B060080 & B060090 : Versiunile îngropate disponibile / buried versions available /  
dostupne zakopane verzije

De asemenea, disponibile la cerere : PE cisterne cilindrice 60 ... 30500 L

Also available on request : PE cylindrical cisterns 60 ... 30500 L

Dostupni i na upit: PE cilindrični vodokotlići 60 ... 30500 L





### Silozuri

Fabricate din HDPE (cu oțel zincat sau cadru de susținere din oțel inoxidabil) sau din oțel galvanizat complet. Formă cilindrică inferioară conică sau plată.

### Silos

Made of HDPE (with galvanised steel or stainless steel support frame) or complete galvanised steel. Conical or flat bottom cylindrical shape.

### Silos

Od HDPE (sa nosećim okvirom od pocinčanog čelika ili nehrđajućeg čelika) ili potpuno pocinčanog čelika. Konusnog ili ravnog dna cilindričnog oblika.

📖	Vol. (L)	Ø × ↑ × ↑ (ext. mm)	📖	Vol. (L)	Ø × ↑ × ↑ (ext. mm)
PE cilindru / PE cylinder / PE cilindar					
B061010	1150	1310 × 900	B061110	5100	1800 × 2100
B061020	1530	1210 × 1410	⋮	⋮	⋮
B061030	1850	1210 × 1670	B061180	8050	2480 × 1750
B061040	2100	1310 × 1580	B061190	9650	2000 × 3160
B061050	2700	2250 × 700	B061200	9750	2480 × 2100
B061060	2950	1310 × 2230	B061210	12500	2250 × 3180
B061070	3750	1580 × 1920	B061220	14400	2250 × 3720
B061080	3800	2250 × 1010	B061230	19600	2480 × 4070
B061090	4450	1580 × 2295	B061240	24600	2480 × 5200
B061100	4450	2250 × 1175	B061250	26700	2450 × 5880
PE conic / PE conical / PE konusni					
B062010	70	380 × 190 × 1095	B062180	3200	1685 × 1460 × 2800
B062020	125	460 × 230 × 1260	⋮	⋮	⋮
B062030	190	595 × 300 × 1200	B062290	8000	2116 × 1058 × 3650
B062040	300	675 × 340 × 1360	B062300	7900	2120 × 495 × 3400
B062050	500	1290 × 645 × 1185	B062310	8500	2380 × 1420 × 3400
B062060	800	1290 × 1110 × 1665	B062320	8900	2120 × 1835 × 3750
B062070	900	1290 × 645 × 1570	B062330	9200	2116 × 1060 × 4030
B062080	1000	1290 × 1110 × 1840	B062340	9000	2116 × 1830 × 4260
B062090	1200	1290 × 645 × 1830	B062350	10000	2120 × 495 × 4100
B062100	1400	1290 × 645 × 2020	B062360	10000	2380 × 1420 × 3800
B062110	1400	1290 × 1110 × 2195	B062370	11600	2140 × 500 × 4650
B062120	1900	1290 × 645 × 2515	B062380	12350	2380 × 1420 × 4430
B062130	1900	1290 × 645 × 2535	B062390	13000	2380 × 1420 × 4600
B062140	1900	1290 × 1110 × 2685	B062400	12900	2140 × 500 × 5050
B062150	2450	1620 × 1455 × 2400	B062410	15350	2380 × 1420 × 5155
B062160	3000	2040 × 475 × 1800	B062420	17000	2380 × 1420 × 5645
B062170	2350	2070 × 870 × 1685	B062430	18700	2380 × 1420 × 6045
Conic oțel galvanizat / Galv. steel conical / pocinčani čelik konusni					
B063010	5560	2000 × 1730 × 3420	B063050	15940	3000 × 2600 × 4580
B063020	9010	2000 × 1730 × 4520	B063060	23710	3000 × 2600 × 5680
B063030	12460	2000 × 1730 × 5620	B063070	31480	3000 × 2600 × 6780
B063040	15920	2000 × 1730 × 6720	-	-	-

☞ Versiunea cilindru oțel galvanizat la cerere : vezi pagina 21  
Cylindrical galv. steel version available on request ; see also page 21  
Cilindrični pocinčani čelična verzija dostupna na zahtjev ; vidi takođe stranu 11

☞ PE bazine circulare pagina 14 / PE circular tanks page 14 /  
PE kružni rezervoari strana 14

### Rezervoare oțel

Fabricat din oțel galvanizat de 0,6 mm și căptușeală din PVC 0,8 mm

### Steel holding tanks

Made of galvanized steel 0,6 mm and PVC liner 0,8 mm.

### Čelični spremnici

Izrađen od pocinčanog čelika 0,6 mm i PVC obloge 0,8 mm.

📖	Vol. (L)	Ø × ↑ (mm)	📖	Vol. (L)	Ø × ↑ (mm)
B040510	2600	2000 × 900	B040530	7800	3000 × 1200
B040520	5700	3000 × 900	B040540	10600	3500 × 1200

### Bazine metalice circulare

Realizat din oțel Sheraplex si 1 mm grosime folie butil galvanizat (negru culoare standard alte culori la cerere). Pentru instalare pe platformă de beton sau de până la jumătate din înălțimea de mai jos la sol. Versiunea cu apă de mare acoperire cu pulbere externă. Opțiune : PVC fitting (2" ... 4").

### Metallic circular tanks

Made of Sheraplex galvanised steel and 1 mm thickness butyl liner (standard colour black ; other colours on request). For installation on concrete platform or up to half height below ground. Seawater version with external powder coating. Option : PVC bulkhead fitting (2" ... 4").

### Metalni kružni rezervoari

Napravljen od Sheraplexa pocinčani čelik i butilna obloga debljine 1 mm (standardna boja crna ; ostale boje na upit). Za ugradnju na betonsku platformu ili do pola visine ispod zemlje. Verzija s morskom vodom sa vanjskim premazom u prahu. Opcija: PVC pregrada (2" ... 4").



Ø (ext. mm)	↑ 810 mm		↑ 1520 mm			
	Vol. (l)	A	B	Vol. (l)	A	B
2770	4000	B027750	B028150	8300	B027850	B028250
3690	7200	B027752	B028152	14800	B027852	B028252
4600	11100	B027754	B028154	22900	B027854	B028254
5530	16100	B027756	B028156	33100	B027856	B028256
6450	21900	B027758	B028158	45100	B027858	B028258
7380	28700	B027760	B028160	59000	B027860	B028260
8300	36300	B027762	B028162	74600	B027862	B028262
9220	44700	B027764	B028164	92100	B027864	B028264
11110	65000	B027768	B028168	133800	B027868	B028268
12900	87600	B027772	B028172	180300	B027872	B028272

A	B	Vol. (l)	Ø x ↑ (ext. mm)
B027950	B028350	7900	3000 x 1260
B027952	B028352	14100	4000 x 1260
B027954	B028354	22000	5000 x 1260
B027956	B028356	31700	6000 x 1260
B027958	B028358	43100	7000 x 1260
B027960	B028360	56300	8000 x 1260
B027962	B028362	71300	9000 x 1260
B027964	B028364	88000	10000 x 1260
B027966	B028366	126700	12000 x 1260
B027968	B028368	172400	14000 x 1260
B027970	B028370	225200	16000 x 1260
B027972	B028372	285000	18000 x 1260

A : apa dulce / freshwater / slatkovodne - B : apa de amre / seawater / morska voda

### Aquafeat®

Piscina din beton cu forma modulara din polipropilena: panouri dintr-o bucata de 1 m latime si elemente de colt, care se obloață cu armare integrată permițând realizarea piscinelor in întregime fără spargerea betonului (pereti si placa).

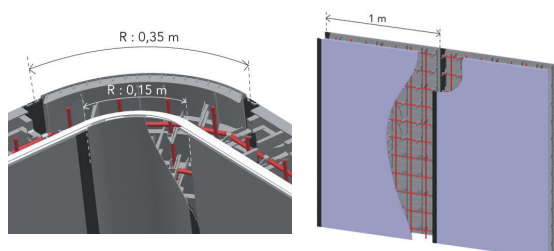
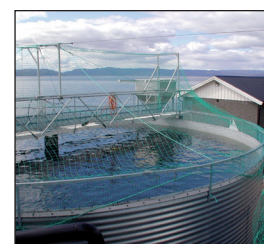
### Aquafeat®

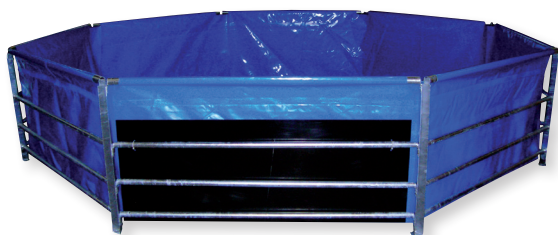
Concrete tank with modular polypropylene formwork : monobloc wall elements 1 m width and corners, including integrated steel framework, which serves as form or shutters for tank construction, without concrete break (walls and floor).

### Aquafeat®

Betonski rezervoar sa modularnom polipropilenskom oplatom: monoblok zidni elementi širine 1 m i uglovi, uključujući integrisani čelični okvir, koji služi kao oblik ili kapci za konstrukciju rezervoara, bez betonskog lomljenja (zidovi i pod).

DESCR.	↑ 1150 mm	↑ 1300 mm	↑ 1450 mm	↑ 1600 mm
□	B028410	B028412	B028414	B028416
R150	B028418	B028420	B028422	B028424
R1500	B028426	B028428	B028430	B028432
R3000	B028434	B028436	B028438	B028440
R6000	B028442	B028444	B028446	B028448





### Rezervoare membrană

Rezervor rabatabil. Cadru fabricat din oțel galvanizat sau PVC ; Folie din PVC (culori standard gri, albastru). Opțiuni : cadru armat și / sau folie extra durabila.

### Membrane tanks

Collapsible tank. Frame made of galvanised steel or PVC ; foil made of PVC (standard colours grey, blue). Options : reinforced frame and/or heavy-duty foil.

### Membranski rezervoari

Sklopivi rezervoar. Okvir od pocinčanog čelika ili PVC-a; folija od PVC-a (standardne boje siva, plava). Opcije: ojačani okvir i/ili čvrsta folija.

📖	Vol. (L)	➔➔➔ (mm)	📖	Vol. (L)	Ø × ↑ (mm)
Suport oțel / Steel frame / Čelični okvir					
B028500	1500	2000 × 1000 × 900	B028900	5300	3000 × 900
B028600	2200	3000 × 1000 × 900	B029000	9400	4000 × 900
B028700	3400	3000 × 1500 × 900	B029100	14700	5000 × 900
B028800	4500	4000 × 1500 × 900	B029200	21200	6000 × 900
Suport PVC / PVC frame / APVC okvir					
B029410	340	900 × 600 <i>ECO</i>	B029450	3580	2000 × 1200
B029420	1240	1500 × 760	B029460	5590	2500 × 1200
B029430	1780	2000 × 760	B029470	8000	3000 × 1200
B029440	3400	2500 × 760	B029480	10970	3500 × 1200

🔗 accesorii pagina 12 / accessories page 12 / pribor strana 12

### Geomembrană

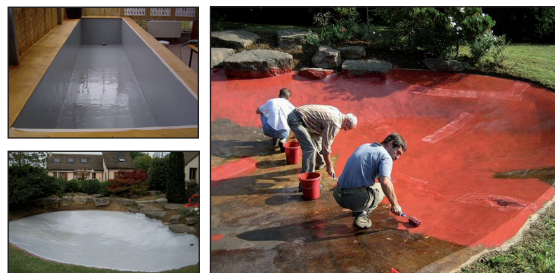
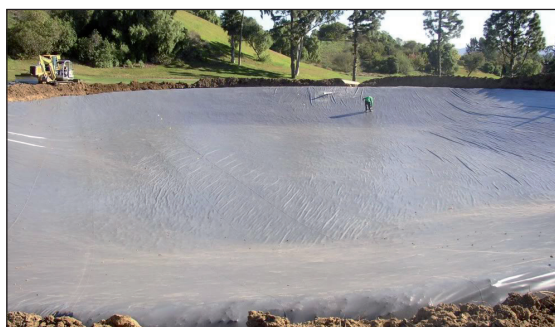
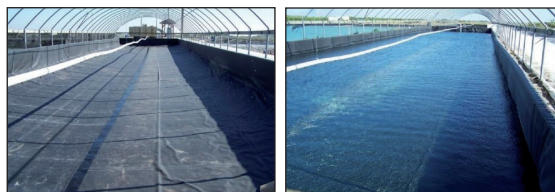
Geomembrană EPDM sau PVC. Croiala personalizata si accesorii la cerere.

### Geomembrane

EPDM or PVC geomembrane. Custom cut and accessories on request.

### Geomembrana

EPDM ili PVC geomembrana. Prilagođeni kraj i dodaci na zahtjev.



📖	➔➔ (m)	↔ (mm)	📖	➔➔ (m)	↔ (mm)
EPDM			PVC		
B050010	3,05 × 30	1	B050505	1,80 × 20	0,5
B050011	4,57 × 30		B050508		0,8
B050020	6,10 × 30		B050510		1,0
B050021	7,62 × 30		B050512		1,2
-	-		B050515		1,5
B050420	Lână PES / PES fleece / PES runo		300 g/m <sup>2</sup> 3 × 20 m		
B050430	Geotextil PEX / PEX geotextile / PEX geotekstila		300 g/m <sup>2</sup> 6 × 80 m		
B050341	Lipici de grund / Primer glue / Prajmer ljepljivo		4 L (≈ 20 m <sup>2</sup> /L)		
B050370	Roll / Roll / Roll				
B050325	Banda adeziva / Adhesive strip / Ljepljiva traka		EPDM 0,15 × 30 m		
B050380	Preser / Smoother / Presser				

### Impermax Aqua®

Etansare strat impermeabil, unic component, poliuretan pe bază.

### Impermax Aqua®

Single component liquid waterproof material made of polyurethane.

### Impermax Aqua®

Jednokomponentni tečni vodootporni materijal od poliuretana.

📖	DESCR. / OPIS	kg/m <sup>2</sup>
B030950	IPU gri 25 kg / IPU grey 25 kg / IPU siva 25 kg (RAL 9018)	2
B030955	IPU negru 25 kg / IPU black 25 kg / IPU crna 25 kg (RAL 9011)	
B030960	IPU albastru 25 kg / IPU blue 25 kg / IPU plava 25 kg (RAL 5015)	
B030970	Primar 5 kg / Primer 5 kg / Primer 5 kg	0,3
B030975	Primar 10 kg / Primer 10 kg / Primer 10 kg	
B030980	Tixotropant 1 kg / Thixotropy agent 1 kg / Tikotropant 1 kg	

### Docuri modulare si plutitoare

Sistem modular cu cuburi realizate din material Novolen® rezistent la raze UV, dimensiuni de 50 x 50 x 50 cm, unitate de greutate 6.2 kg, flotabilitate 370 kg/m<sup>2</sup>. Asamblare ușoară și demontare.

### Modular floating pontoons and docks

Modular system with cubes made of UV-resistant Novolen® material, dimensions 50 x 50 x 50 cm, unit weight 6.2 kg, buoyancy 370 kg/m<sup>2</sup>. Easy assembly and dismantling.

### Modularni plutajući ponton

Modularni sistem sastavljen od kocki u UV otpornom Novolen® materijalu, dimenzija 50 x 50 x 50 cm, težine jedinice 6,2 kg, nosivosti 370 kg/m<sup>2</sup>. Jednostavna montaža i demontaža.



📖	DESCR. / OPIS
W000101	Ponton plutitor / Floating pontoon / Plutajući ponton
W000102	Bolț / Bolt / Bolt
W000103	Disc / Disc / Disk
W000104	Clemă / Fastener / Stezaljka
W000111	Șurub lateral din material plastic / Plastic side screw / Plastični bočni vijak
W000202	Șurub lateral oțel galv. / Galv. steel side screw / Pocinčani čelik bočni vijak
W000112	Țăruș plastic ancorare barca / Plastic boat cleat / Plastični vez za čamac
W000204	Țăruș oțel galv. / Galv. steel fastening cleat / Poc. čelik bitve za pričvršćivanje
W000203	Suport ancorare / Anchoring holder / Podrška sidra
W000205	Balustradă / Railing post / Ograda
W000211	Suport / Pile holder / Podrška
W000212	Bara laterală / Side bar / Bočna traka

accesorii oțel inoxidabil la cerere / stainless steel accessories on request / pribor od nehrđajućeg čelika na upit

### Viviere / Flotoare

- cuști pătrate pentru apă tip lacuri (a se vedea tabelul) : include PEHD flotoare PU injectat, dimensiuni 114 x 60 x 29 cm (4 cm care se suprapun), set de șuruburi și dimensiunea ochiurilor plasa de 10 sau 15 sau 20 mm ;

- offshore (mare) viviere circulare Ø 10 ... 50 m, PE pipe Ø 200/225/250/315 mm.

Accesorii : ancore, boiandru, pasarele, curatare plasa, camere subacvatice, lumini, ...

### Cages

- inland water square cages (see table) : includes PEHD floats PU injected, dimensions 114 x 60 x 29 cm (overlap 4 cm), screw set and net mesh size 10 or 15 or 20 mm ;

- offshore circular cages Ø 10 ... 50 m, PE pipe Ø 200/225/250/315 mm.

Accessories : anchors, buoys, walkways, net cleaner, camera, lights, ...

### Kavezi

- četvrtasti kavezi za unutrašnje vode (vidi tabelu): uključuje PEHD plovke PU ubrizgane, dimenzije 114 x 60 x 29 cm (preklapanje 4 cm), set vijaka i veličinu mreže 10 ili 15 ili 20 mm ;

- kružni kavezi Ø 10 ... 50 m, PE cijev Ø 200/225/250/315 mm.

Dodatna oprema: sidra, bove, staze, čistač mreže, kamera, svjetla, ...

📖	→↗↖(mm)	📖	→↗↖(mm)
W003010	2,2 x 2,2 x 2,0	W003035	7,5 x 7,5 x 2,0
W003015	3,2 x 3,2 x 2,0	W003040	8,6 x 8,6 x 2,0
W003020	4,3 x 4,3 x 2,0	W003045	9,6 x 9,6 x 2,0
W003025	5,4 x 5,4 x 2,0	W003050	10,7 x 10,7 x 2,0
W003030	6,4 x 6,4 x 2,0	-	-

☞ Plasa : vezi capitol M pagina 95 / Nets : see chapter M page 95  
Mreže: vidi poglavlje M strana 95

